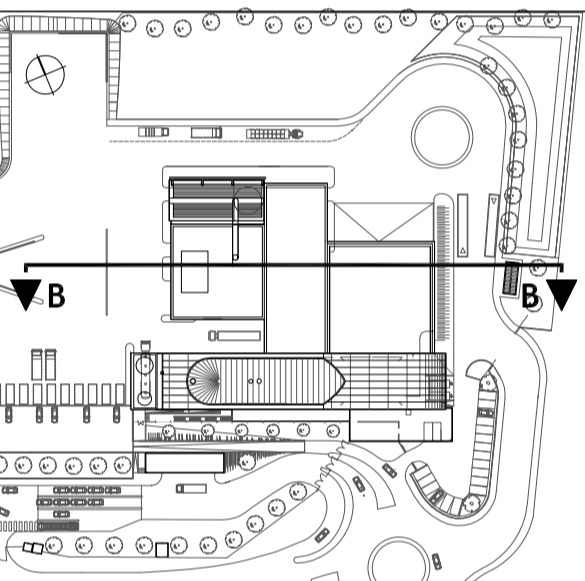


NOTES

SH 2

- ① CAST IN SITU CONCRETE F3 FINISH
- ② VERTICAL TRAPEZOIDAL CLADDING
RAL 9005 - RAL 9005
RAL 9005 - RAL 9005
- ③ DIAMPALON CRESTAL SOFTLITE
MATT FINISH INTERNAL - REVERSED SETTING
- ④ DIAMPALON CRESTAL SOFTLITE
MATT FINISH EXTERNAL - REVERSED SETTING
- ⑤
- ⑥ GLAZED CURTAIN WALLING CLEAR AND OPAQUE
- ⑦ CLEAR GLAZING
- ⑧ OPAQUE GLAZING
COLOUR SHADES AND RANGE
TO BE APPROVED
- ⑨ CORUS KALZIP ROOFING OR SIMILAR (TAPERED ALU FINISH)
- ⑩ PAINTED BOX SECTION OPEN STEEL FRAME
COLOUR SHADE TO BE APPROVED
- ⑪ VERTICAL GRATING ON STEEL FRAME
COLOUR SHADE TO BE APPROVED
- ⑫ MESH SCREEN WALL
SOLTES MESH RANGE 381
COLOUR SHADE - TROBA GREEN
- ⑬ CHIMNEY - POLYURETHANE PAINT RAL 9005
MERCEDES GREY FROM EXISTING OR SIMILAR APPROVED
- ⑭ RED BRICK TO MATCH WITH EXISTING IHC BUILDING
- ⑮ ROLLER SHUTTER DOORS
COLOUR SHADE RAL 9005
- ⑯ SCREENS WITH PLANTED ROOF OR SIMILAR APPROVED
SPECIES AND RANGE TO BE APPROVED
- ⑰ FAST ACTING DOOR - CRAWFORD MEGADOR or IHC
COLOUR SHADE RAL 9005
- ⑱ SILKSCREEN PRINTED BARRIERS
COLOUR SHADE TO BE APPROVED

- FENCE SITE
2.4M HIGH DARK GREEN COLOUR COATED
ENLARGED HIGH FENCING TO MATCH THE EXISTING FENCING
- ARCHITECTURAL STAIRCASE AND WALKWAYS (INCLUDING HANDRAILS)
: HIGH QUALITY GALVANISED FINISH



INTERNAL EQUIPMENTS
ARE INDICATIVE ONLY
LEVEL ±0.00 = 72.25 AOD

Rev.	Date	By	Description
0	05/12	ND	Planning Application Issue

REVISION

Battlefield Energy from Waste Facility

Shropshire

VEOLIA ENVIRONMENTAL SERVICES

space architecture | environment
space is a subsidiary

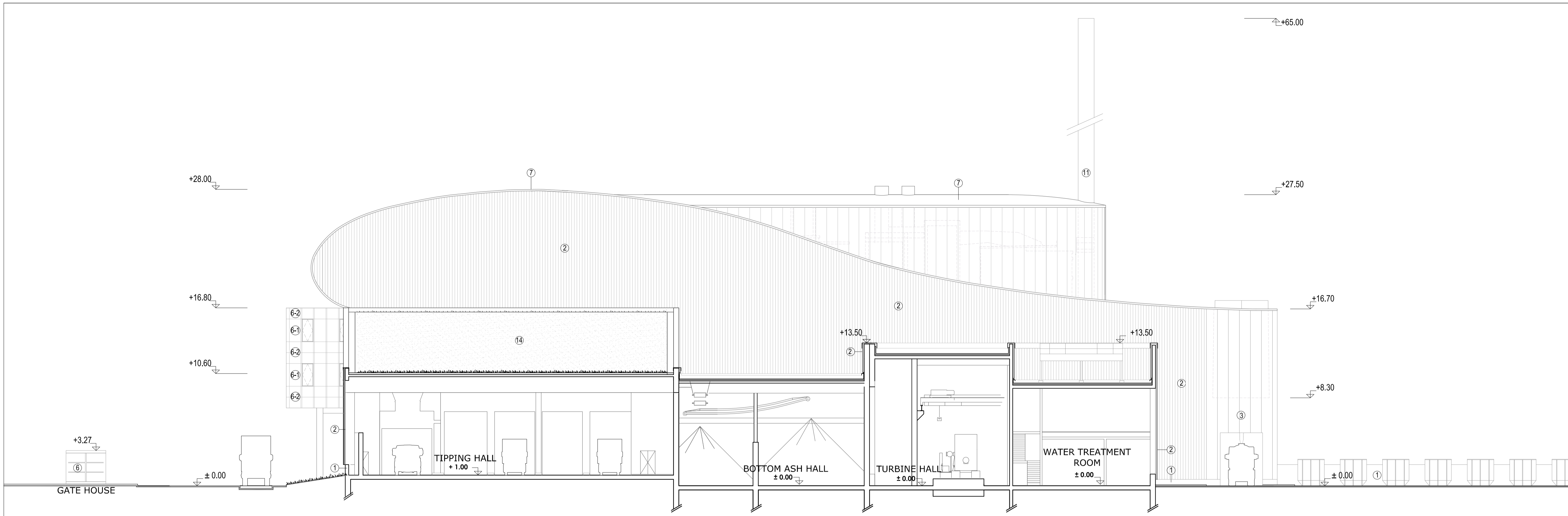
111, New Mallory F-92300 Wymour-Deine
tel: +44 (0) 145 55 111 fax: +44 (0) 145 56 111
e-mail: space.arch@blueholding.com

DATE	DECEMBER 2008	SCALE	1:200
CHECKED	PHQ	APPROVED	JRM

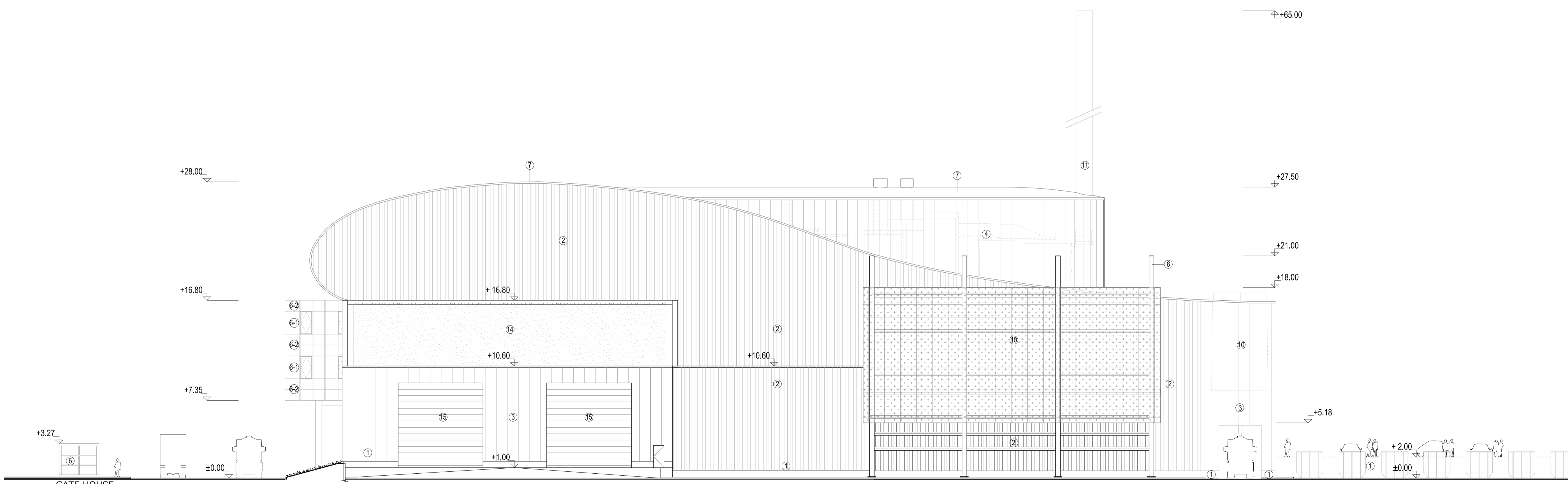
TITLE: PLANNING APPLICATION

TITLE: NORTH ELEVATION & SECTION B-B

2GB11 1 2 1 0



SECTION B-B



NORTH ELEVATION

